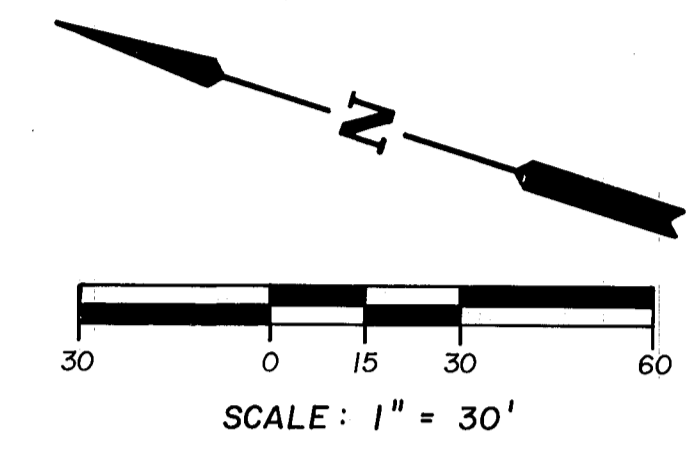


RESOLUTION NO. 06-254  
 VACATE ESMT  
 RECORDED 9/29/06 OR 4114 PG 1267-1269  
 PLAT BOOK 15 PAGE 72

RESOLUTION NO. 2013-188  
 Vacate portion of 10th Drainage Esmt  
 part of lots 2, 3 & 4  
 RECORDED 9/16/13 OR 4965 PG 1697-1702  
 PLAT BOOK 15 PAGE 72

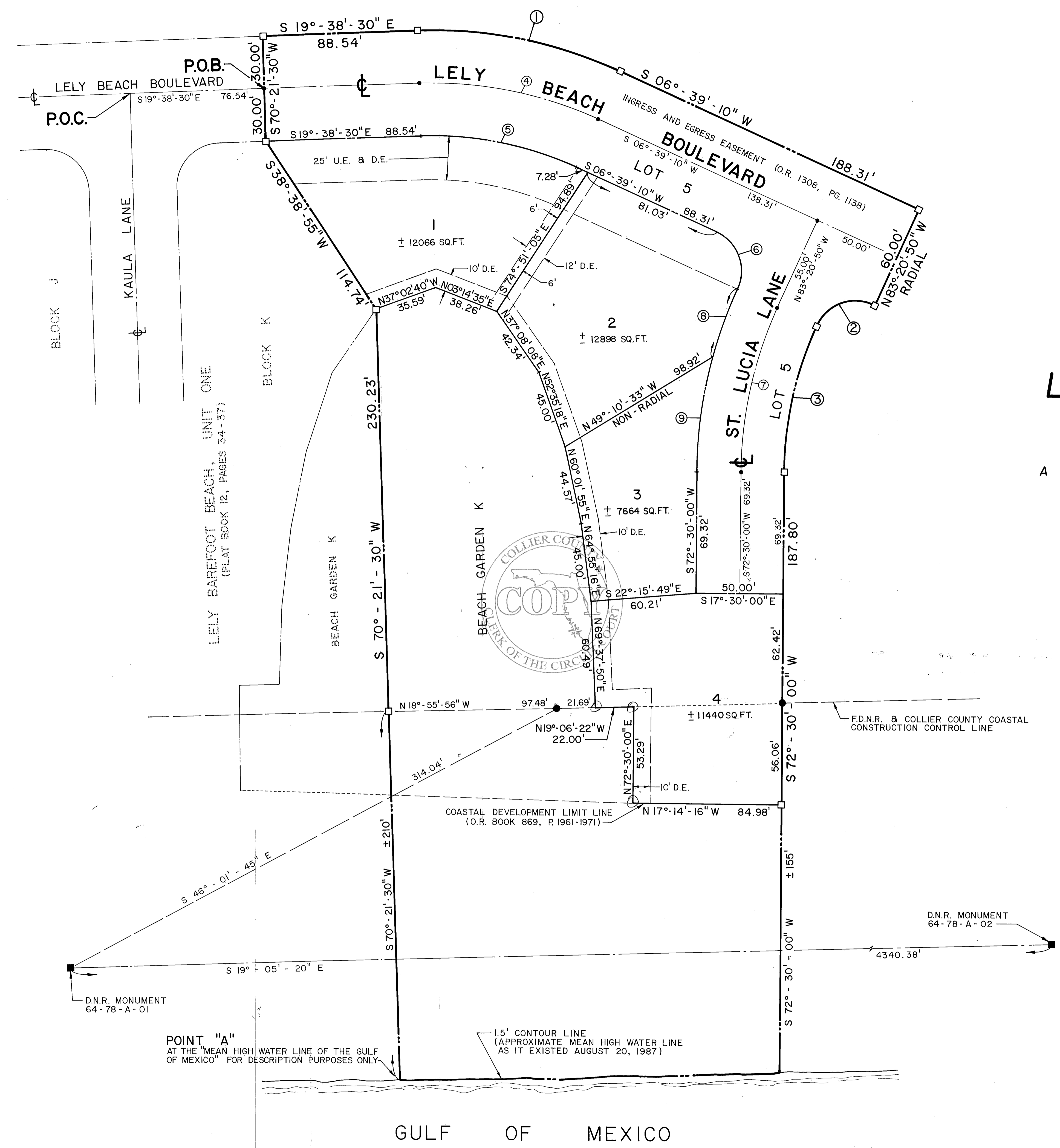


# LELY BAREFOOT BEACH UNIT TWO

A SUBDIVISION LYING IN SECTION 6, TOWNSHIP 48 SOUTH,  
 RANGE 25 EAST, COLLIER COUNTY, FLORIDA.

### ○ - CURVE DATA

Curve No.	Radius	Delta	Arc	Tangent	Chord	Chord Bearing
1	260.00'	26°17'40"	119.32'	60.73'	118.28'	S06°29'40"E
2	25.00'	90°00'00"	39.27'	25.00'	35.36'	N38°20'50"W
3	205.00'	24°09'10"	86.42'	43.86'	85.78'	S84°34'35"W
4	230.00'	26°17'40"	105.55'	53.72'	104.63'	S06°29'40"E
5	200.00'	26°17'40"	91.78'	46.72'	90.98'	S06°29'40"E
6	25.00'	90°00'00"	39.27'	25.00'	35.36'	S51°39'10"W
7	230.00'	24°09'10"	96.96'	49.21'	95.24'	S84°34'35"W
8	255.00'	09°12'44"	41.00'	20.54'	40.96'	N87°57'12"W
9	255.00'	14°56'26"	66.49'	33.44'	66.31'	S79°58'13"W



POINT "A"  
 AT THE MEAN HIGH WATER LINE OF THE GULF  
 OF MEXICO FOR DESCRIPTION PURPOSES ONLY

1.5' CONTOUR LINE  
 (APPROXIMATE MEAN HIGH WATER LINE  
 AS IT EXISTED AUGUST 20, 1987)

GULF OF MEXICO

DRAWING NUMBER  
**PG 72**

DRAWING NUMBER  
**PB 15**

DRAWING NUMBER

DRAWING NUMBER

PLAN HOLD CORPORATION • IRVINE, CALIFORNIA  
 RECORDED BY NUMBER 0728A

PLAN HOLD CORPORATION • IRVINE, CALIFORNIA  
 RECORDED BY NUMBER 0728A

PLAN HOLD CORPORATION • IRVINE, CALIFORNIA  
 RECORDED BY NUMBER 0728A

PLAN HOLD CORPORATION • IRVINE, CALIFORNIA  
 RECORDED BY NUMBER 0728A

AP 1752B